

ΙΣΝ *SNf* STAVROS NIARCHOS FOUNDATION
www.snf.org

The Stavros Niarchos Foundation (SNF)

A leading international philanthropic organization, making grants in the areas of arts and culture, education, health and medicine, and social welfare.

From 1996 until today, the Stavros Niarchos Foundation has approved grant commitments of \$1.41 billion / €1.07 billion, through 2,582 grants to nonprofit organizations in 109 nations around the world.

The Foundation's largest single gift (\$796 million / €566 million) is the Stavros Niarchos Foundation Cultural Center (SNFCC) in Athens.

Excluding the SNFCC, the Foundation's funding is equally divided between grants in Greece and international ones.

The effects of the crisis

Poverty levels rising; number of homeless not consistently measured; more families on the brink of homelessness.

Overall unemployment rate has more than tripled since 2008; data showed those aged 15 to 24 remained the hardest-hit.

Society largely unprepared for the effects, in magnitude and pace, of the crisis.

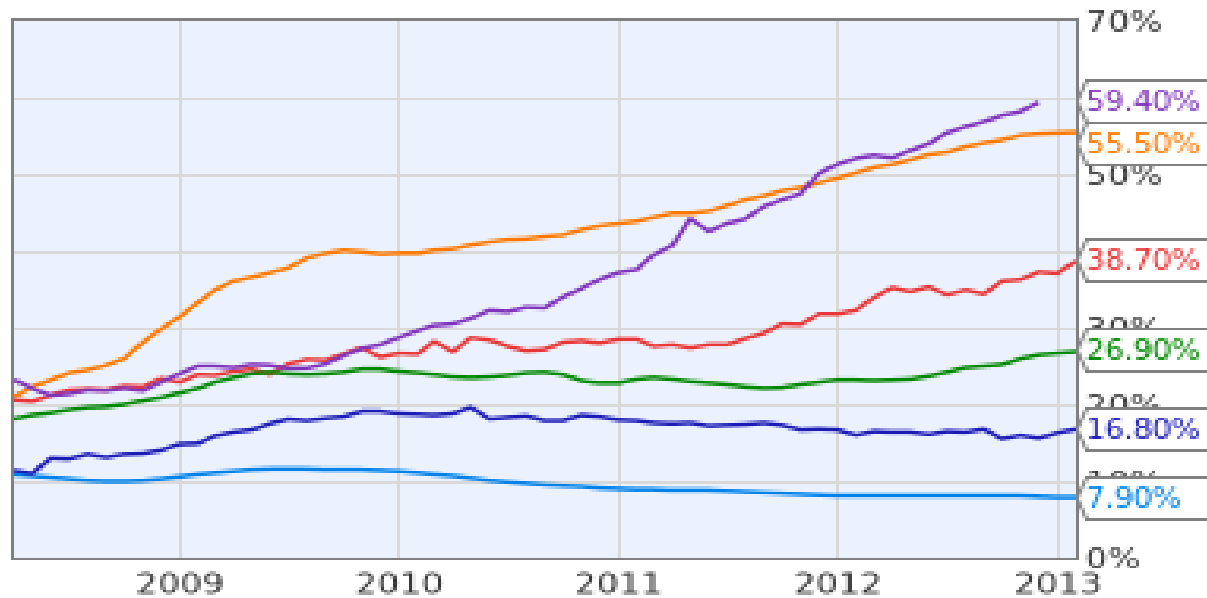
Lack of welfare networks in critical areas of poverty, food aid, homelessness, family abuse, suicide rates, mental health issues.

General uncertainty and lack of sustainability for NGOs. Severe disruptions in direct State funding, social security and welfare payments.

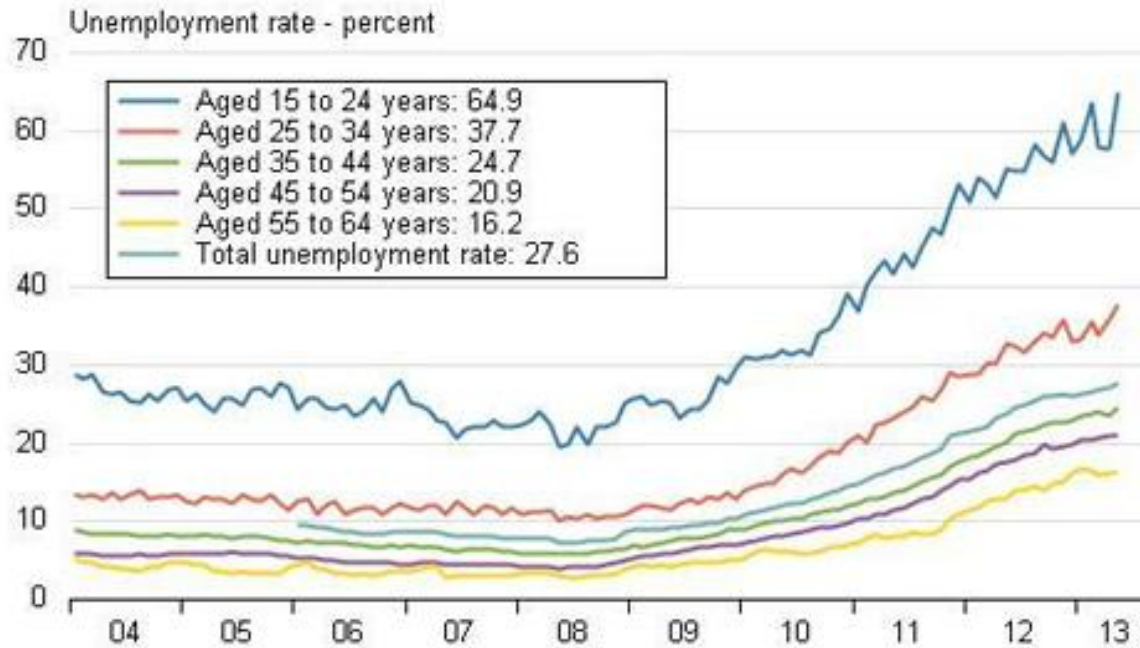
Rise in solidarity; increased signs of community engagement despite the difficulties, albeit still in an unorganized fashion.

Youth Unemployment Rates

- Germany Youth Unemployment Rate
- Spain Youth Unemployment Rate
- Italy Youth Unemployment Rate
- France Youth Unemployment Rate
- Greece Youth Unemployment Rate
- US Youth Unemployment Rate



Greek unemployment rate by age



Source: Thomson Reuters Datastream , National Statistics Service of Greece

V. Flasseur, data to May 13

Challenges for Foundations

Although the needs are great and require extraordinary actions, we believe that the philanthropic sector cannot address such social issues on its own.

- Operational support for NGOs in financial distress
- Transfer of international best practices, lessons to be learned
- Increased emphasis on collaborations
- Supporting Public – Private Partnerships for a philanthropic cause
- Focus on the future and next generation

The SNF's response

The Foundation's grant making activity complements rather than substitutes the efforts of the State.

- Support and strengthen NGOs, selective critical support with operations
- Use and transfer of international best practice to Greece. Extensive collaboration among the 3 SNF offices for the best use of the network as possible
- Collaboration, networking among NGOs and Foundations – in Greece and abroad
- Education in Philanthropy for both NGOs and students, development of a new culture

The SNF's response

- Proactive grant making, development of innovative programs through the Foundation's own initiative, in collaboration with NGO partners from Greece and abroad
- Equal emphasis on Prevention – Alleviation – Rehabilitation – Building for the Future
- PPPs - Collaboration with State and private sector
- International Conferences on Philanthropy

SNF initiative against the Greek crisis

The Foundation announced in January 2012 a **grant initiative of additional €100,000,000** (\$130 million), over three years (2012-2015), to help **ease the adverse effects of the deepening crisis.**

Since then, and as part of the initiative, the SNF has **committed grants totaling €77,2 million** (\$100 million), in support of numerous not-for-profit organizations around the country.

Flexible and accelerated approval of grants in line with the increasing demands due to the crisis.

Targeted grants – some examples

Helping impoverished vulnerable populations

- Social Housing program
- New programs supporting homeless populations
- Food aid and nutrition education programs
- Family Support Centers
- Rehabilitation programs for the homeless and the unemployed
- Reducing waste, bridging surplus supply with demand

Strengthening access to health care

- Mobile Medical Unit Program providing accessible health care throughout Greece
- Targeted equipment and renovation support for Hospitals
- Creation of polyclinics for the uninsured
- Vaccination program for 1,000 children

Targeted grants – some examples

Operational support to key NGOs

- PV Panels Program
- Support of child care institutions
- Emphasis on support for the disabled
- Sustainable care for the elderly

Educational programs & Entrepreneurship

- Johns Hopkins University Center for Talented Youth
- Future Library
- School Support Program
- Arcturos, WWF, American Farm School, Organization Earth

SNF initiative for Recharging the Youth

In October 2013, the SNF announced a new long-term initiative, titled **Recharging the Youth**, to help create new opportunities for Greece's younger generations.

The SNF is **committing additional €100,000,000** to help the future prospects of young people, who are severely impacted by critically high unemployment rates, currently exceeding 60%.

The new initiative is **strategic and long-term** in nature. The issue at hand requires long-term planning, research, proactive engagement, and careful execution, and the development of new innovative solutions.

A **conference** will take place in NYC on April 3-4, 2014

The SNF's largest single gift; a testament to the country's future:



Construction and complete outfitting of new facilities for the National Library of Greece and the Greek National Opera, as well as the creation of the 170,000 m² Stavros Niarchos Park.

Creation of a national and international landmark, designed by Renzo Piano. Emphasis on Education, Culture and Sustainability.

Impact: €1 billion of total economic stimulus from construction, 500 people working on site, projection for 1,500-2,400 annually during construction; € 160 million of direct and indirect economic activity output benefiting local communities, Athens, and Greece in the first year.

Stavros Niarchos Foundation Cultural Center



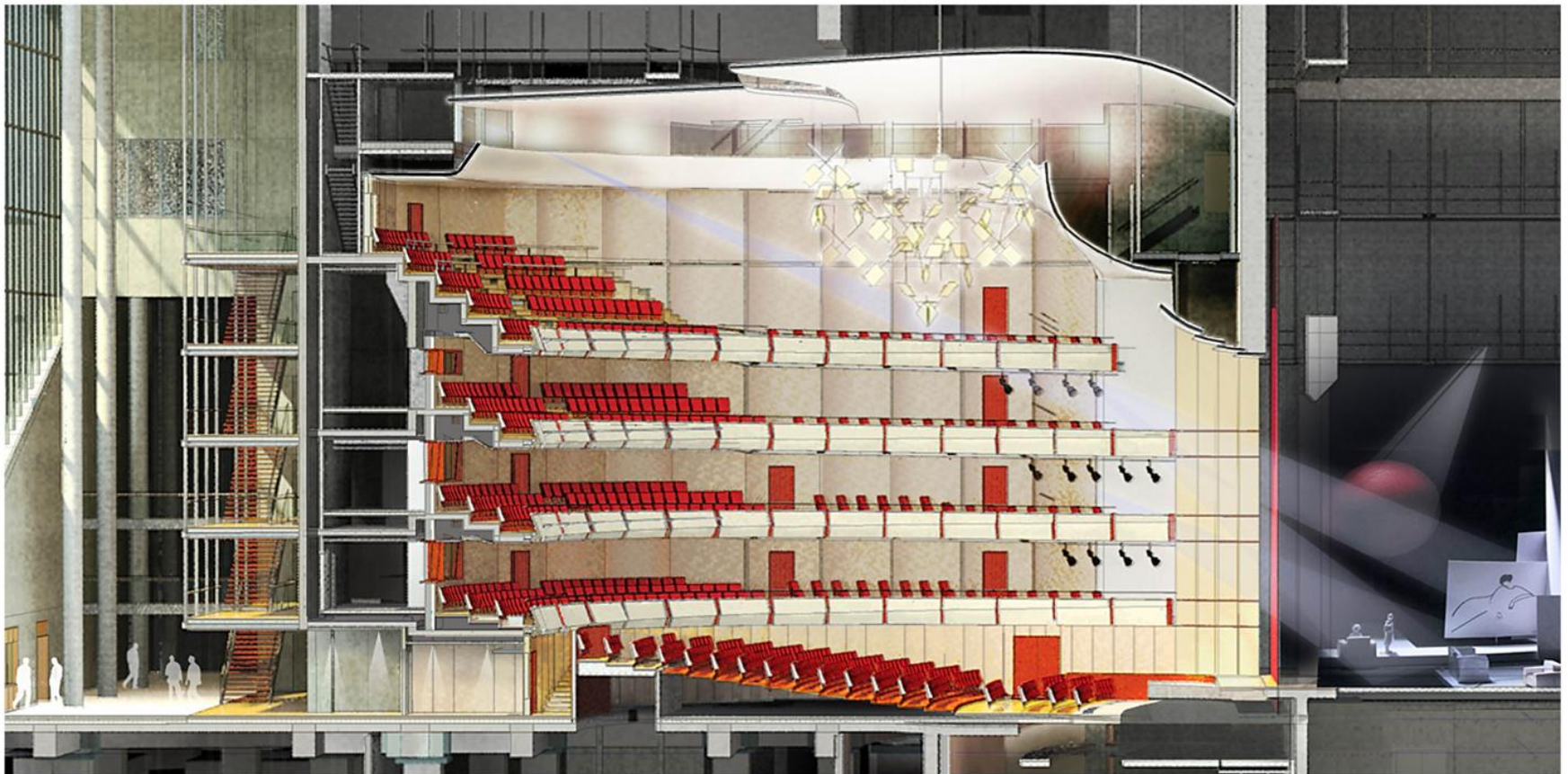
Stavros Niarchos Foundation Cultural Center



Stavros Niarchos Foundation Cultural Center



Stavros Niarchos Foundation Cultural Center



Focus on the future

Need for clear strategies, emphasis on sustainability, development of synergies and collaborations, use of existing capacity and best practices in Greece and abroad, focus on fundraising.

Strengthening of social solidarity, change of mentality, creation of a more involved, proactive, engaged and caring society.

Shifting from a Social Welfare State to a Social Welfare Society.

Emphasis must be placed on the ways out of the crisis: programs targeting new generations, investing on the building blocks for a better society and a better future.